

28 Marion Street Auburn NSW

6 4 1

Situated in the highly sought-after suburb of Auburn, this exceptional property presents a fantastic opportunity for those in search of a double-dwelling residence with entertaining room.

Set on a generous block with a sprawling land size of 613 square meters, this property is a desirable prospect for families seeking more space or astute investors looking to maximize their returns.

Benefiting from R3 zoning, this property offers tremendous flexibility for future development. Its proximity to Auburn Public School and Auburn Train Station further enhances its appeal, making it an excellent location for families with school-age children or commuters.

Price : \$ 1,680,000
Land Size : 613 sqm
View : <https://www.hspartners.com.au/7734360>



Andy Haisheng Shi
02 9643 5888



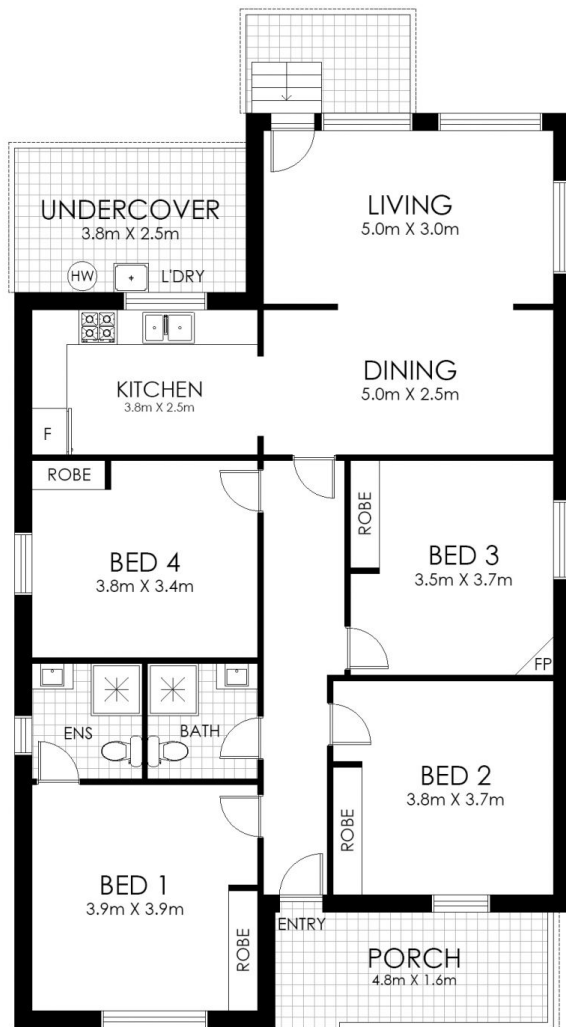
Angela Qiuling Zhang
02 9643 5888

Features Include:

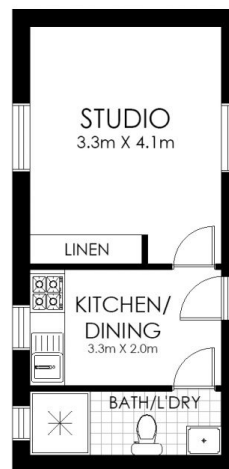
<https://www.hspartners.com.au>



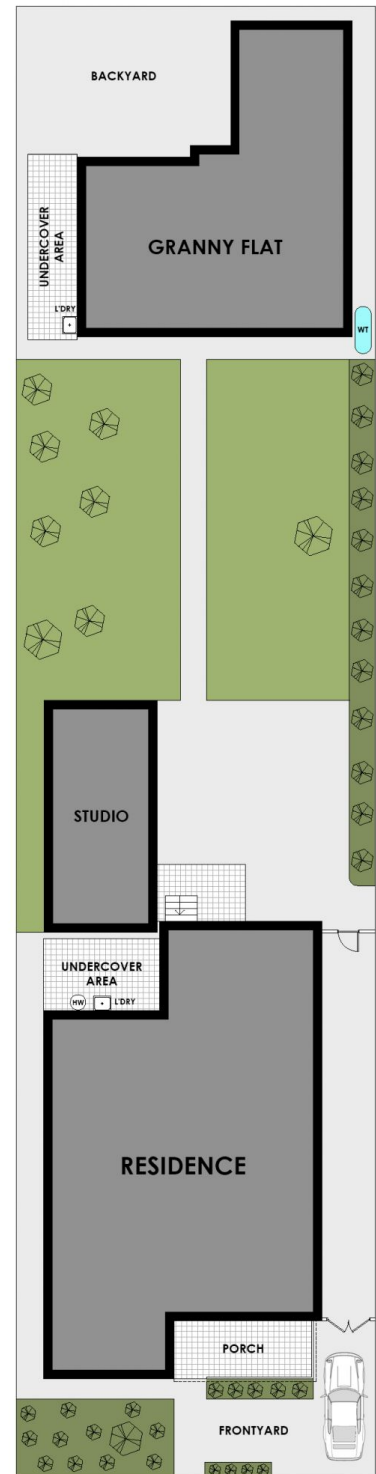
GRANNY FLAT



FLOOR PLAN



STUDIO



SITE PLAN

28 Marion Street, Auburn

WARNING: DISCLAIMER This information is not to be relied upon. It is strictly used for marketing and illustration purposes only. All measurements are approximate. Not to scale. No liability accepted. You must rely on your own inquiries and seek advice from your solicitor. Floor plan by cnkplan@cnkplan.com.au / www.cnkplan.com.au

