



505/1 Ibis Street Lidcombe NSW

2 2 1

This impressive 2 bedder apartment plus generous size of study room is located in Lidcombe suburb but close by Sydney Olympic Park, moments to Auburn, Parramatta and Sydney CBD via M4. Short stroll to the DFO and Top Ryde Shopping Centre.

Multiple bus routes to Wentworth Point and walking distance to Sydney Olympic Park Train Station.

Around the area with indoor badminton/basketball courts, ANZ stadium, Bicentennial Park etc.

Desirable living environment for family, professionals and couples.

This is a place that you must love to move in and enjoy your relax living style.

Main Features:

+ 2 gorgeous sized bedrooms + 1 study room with east facing window

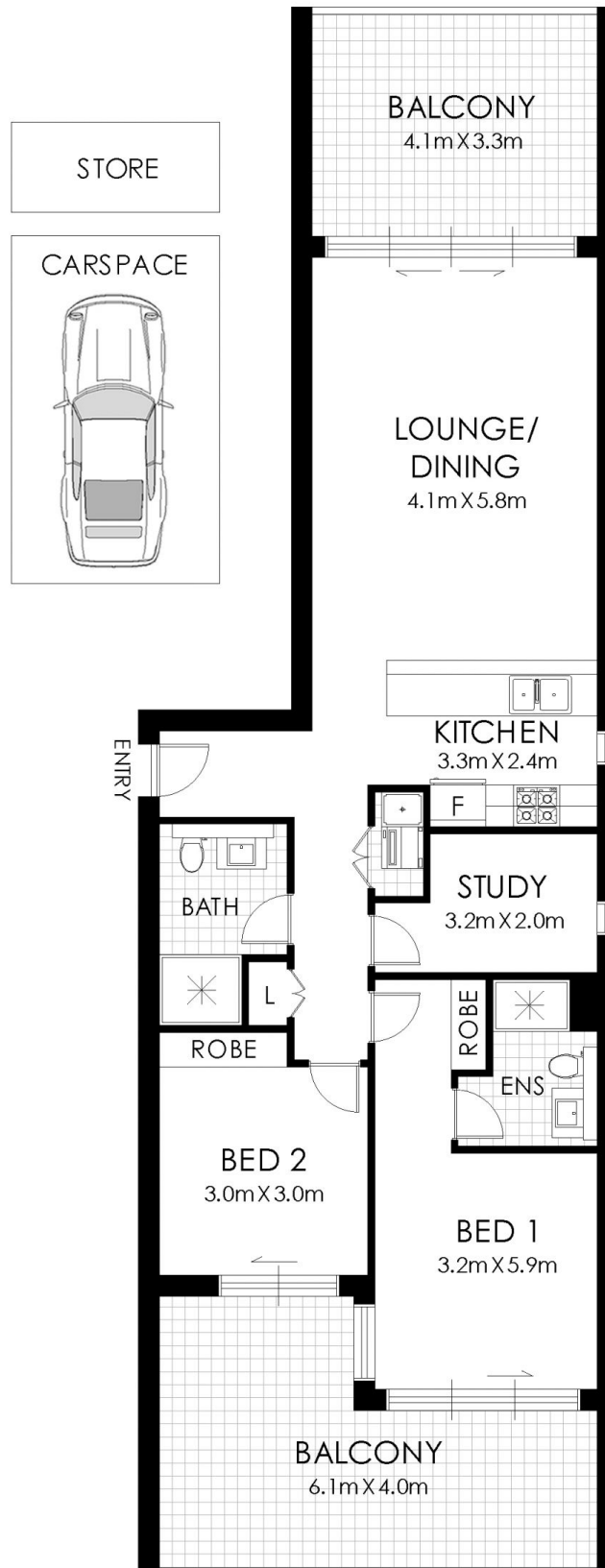
Price : Contact Agent
Building Size : 141 sqm
View : <https://www.hspartners.com.au/7734383>



Andy Haisheng Shi
02 9643 5888



Angela Qiuling Zhang
02 9643 5888



FLOOR PLAN

505/1 Ibis Street, Lidcombe



WARNING: DISCLAIMER This information is not to be relied upon. It is strictly used for marketing and illustration purposes only. All measurements are approximate. Not to scale. No liability accepted. You must rely on your own inquiries and seek advice from your solicitor. Floor plan by cnkplan@cnkplan.com.au / www.cnkplan.com.au