



17 Kingsland Road Berala NSW

4  1  4 

Discover an outstanding 717.79 sqm block real estate opportunity within this property, strategically positioned on the elevated side of the street. This property holds substantial promise, offering the potential to construct two detached double-story dwellings, each with its own lot number subject to council approval.

Nestled in the heart of Berala, mere minutes from Berala train station, local schools, shops, and convenient access to nearby public transportation options.

Notably, properties offering this combination of land size and coveted location are increasingly rare, making this an enticing prospect for astute investors.

Key features:

** Solidly built 4-bedroom residence made entirely of brick

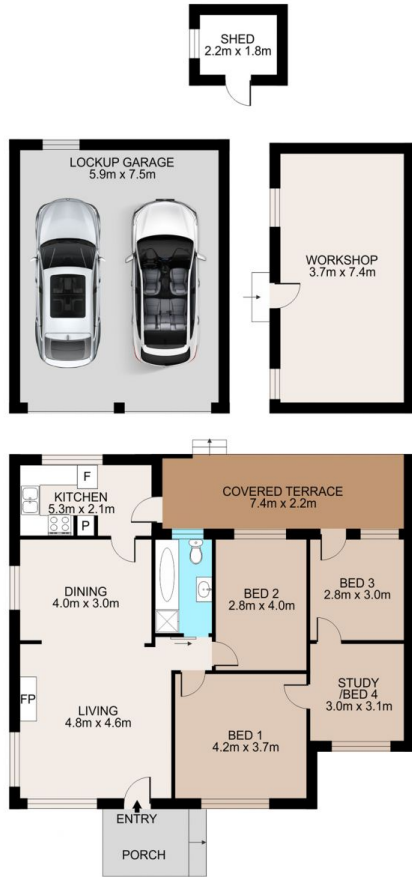
Price : \$ 2,000,000
Land Size : 717.79 sqm
View : <https://www.hspartners.com.au/7766596>



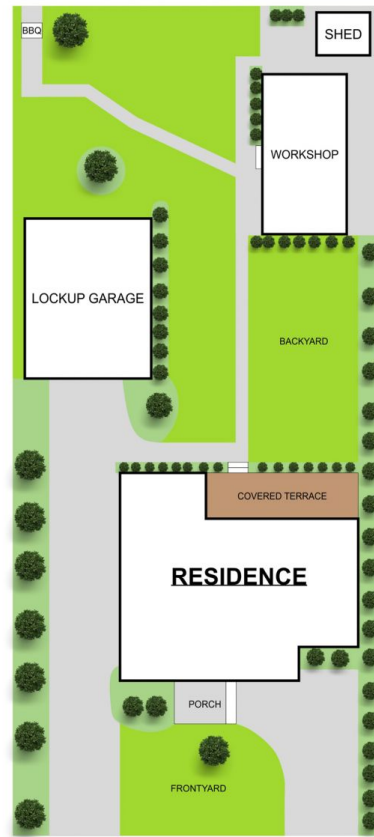
Andy Haisheng Shi
02 9643 5888



Angela Qiuling Zhang
02 9643 5888



Ground Floor



Site Plan



17 Kingsland Rd, Berala

Scale in metres. Indicative only. Dimensions are approximate. All information contained herein is gathered from sources we believe to be reliable. However we cannot guarantee its accuracy and interested persons should rely on their own enquiries

