

1/103-107 John Street Lidcombe NSW

3 2 2

Immaculately presented townhouse is a truly rare offering a private leafy setting. This tri-level townhouse provides a rare opportunity to secure a stylish yet low maintenance property within a well-maintained complex, which only 12 dwellings.

Perfectly placed for families in search of convenience or astute investors looking for high rental yield, from here it's walking distance to Lidcombe schools, train station, shopping precincts and Costco.

Features Include:

- 3 good-sized bedrooms have built-ins and private balconies
- Full brick townhouse with open space, cross-flow ventilation
- Dual outdoor flow, private courtyard is ideal for

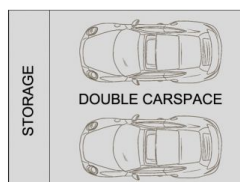
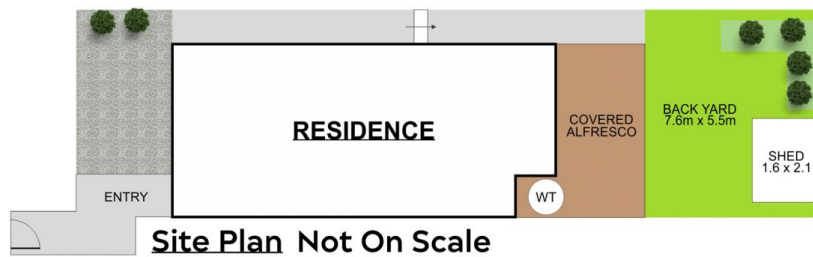
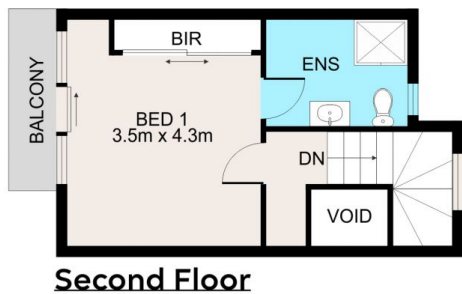
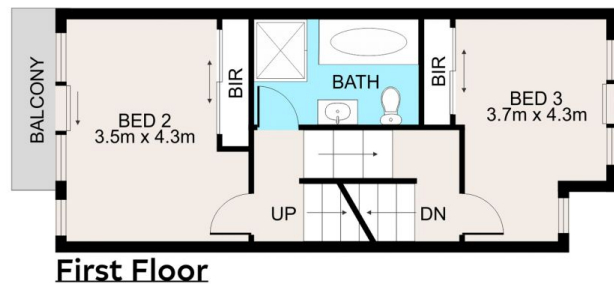
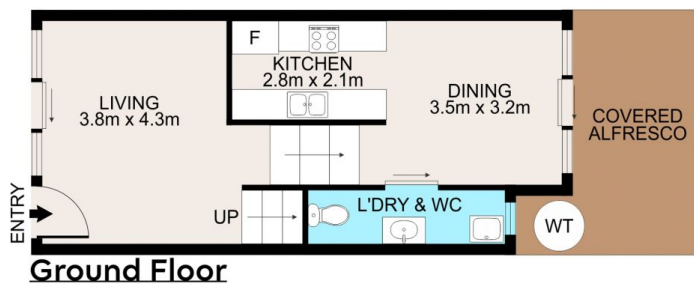
Price : \$ 945,000
Building Size : 223 sqm
View : <https://www.hspartners.com.au/7775465>



Andy Haisheng Shi
02 9643 5888



Angela Qiuling Zhang
02 9643 5888



1/103-107 John St, Lidcombe



Scale in metres. Indicative only. Dimensions are approximate. All information contained herein is gathered from sources we believe to be reliable. However we cannot guarantee its accuracy and interested persons should rely on their own enquiries