



### 1503/11 Hassall Street Parramatta NSW

2 2 1

Perched high on the fifteenth floor of the esteemed "Skyrise" building, this two-bedroom apartment presents a stunning panorama of the city skyline. Its well-considered layout invites plenty of natural light and fresh breezes, with a central balcony adding to the allure.

Positioned in the vibrant heart of Parramatta CBD, residents enjoy seamless access to a wealth of nearby amenities, including an array of bars, restaurants, cafes, parks, and the bustling Westfield Parramatta.

#### Main Features:

- \* Two bedrooms with built-in wardrobe
- \* Open-plan living and dining area with floor-to-ceiling window
- \* Modern gas kitchen with stone benchtops and stainless steel appliances

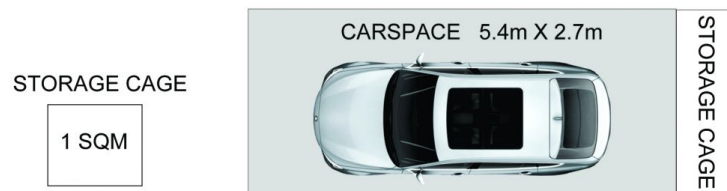
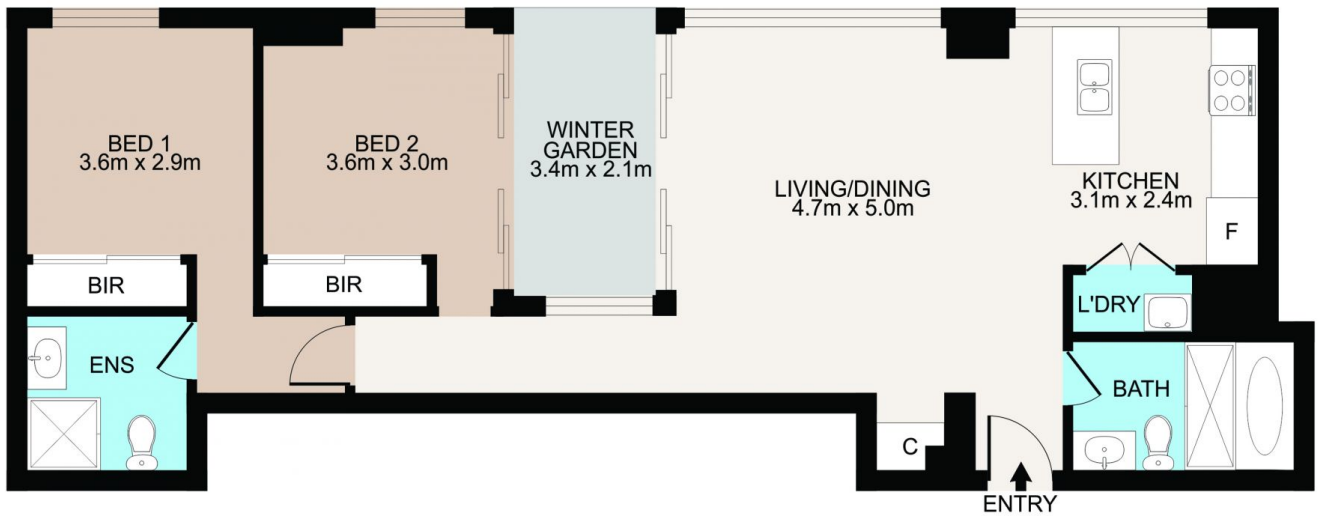
**Price** : \$ 730,000  
**Building Size** : 95 sqm  
**View** : <https://www.hspartners.com.au/7955089>



**Angela Qiuling Zhang**  
02 9643 5888



**Andy Haisheng Shi**  
02 9643 5888



# 1503/11 Hassall St, Parramatta



Scale in metres. Indicative only. Dimensions are approximate. All information contained herein is gathered from sources we believe to be reliable. However we cannot guarantee its accuracy and interested persons should rely on their own enquiries