



23/27-29 Mary Street Auburn NSW

2 🛏 2 🚿 1 🚗

Positioned within one of Auburn's most convenient and high-demand streets, 23/27-29 Mary Street presents an outstanding opportunity to secure a generously proportioned residence offering both lifestyle appeal and investment security. Set within walking distance to Auburn Station, Auburn Central, and a vibrant array of cafés, dining, and everyday amenities, this address delivers effortless urban living in the heart of the suburb.

Occupying a total of approximately 98sqm, the apartment showcases well-balanced interiors with a functional layout designed for comfortable living. The expansive open-plan living and dining area flows seamlessly to outdoor space, while the generous proportions throughout enhance both natural light and everyday practicality. Secure basement

Type : Apartment
Price : \$620,000 ~ \$650,000
Land Size : 98 sqm
View : <https://www.hspartners.com.au/8632580>



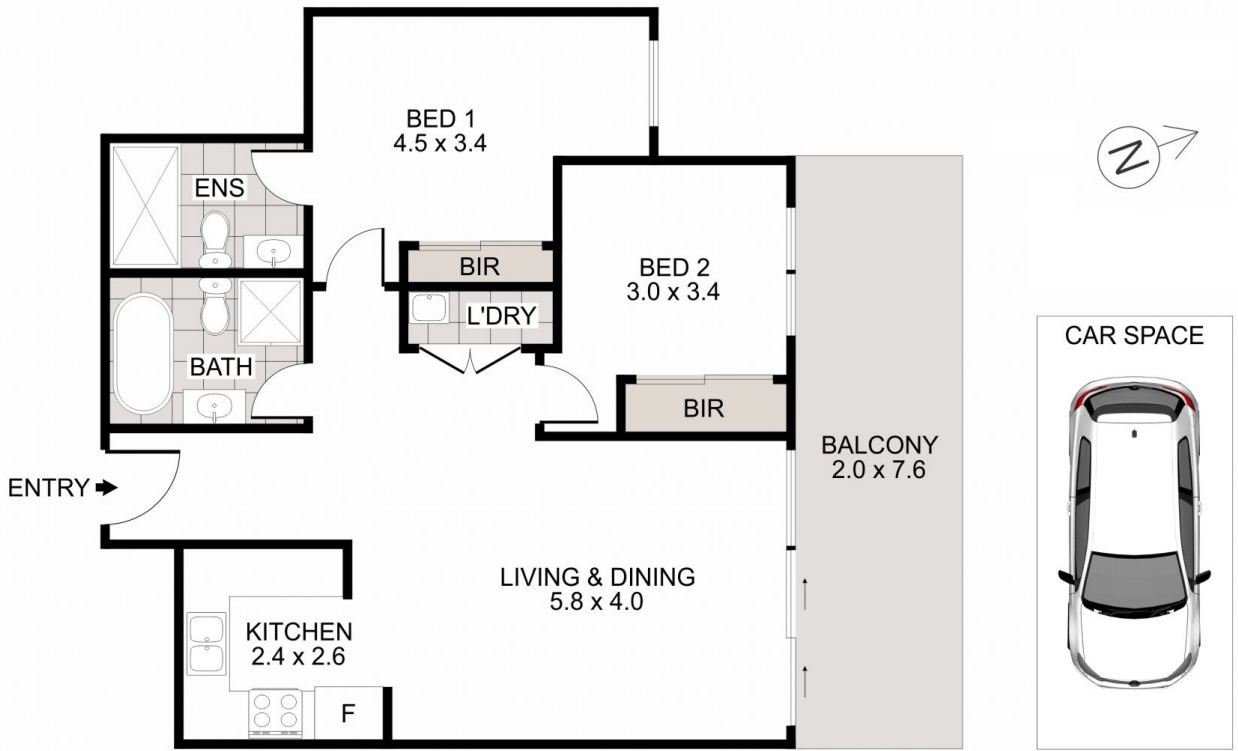
Andy Haisheng Shi
02 9643 5888



Augustine Shi
02 9643 5888

[For full version visit the website](https://www.hspartners.com.au)

<https://www.hspartners.com.au>



23/27-29 Mary Street, Auburn

The information provided on this floor plan is shown for presentation purposes only and are not part of any legal document or title. They are subject to errors, omissions, inaccuracies and should not be used as a sole and accurate reference. Interested parties should make their own inquiries using independent sources.

