



**903/172 South Parade Auburn NSW**

2 2 1

Positioned within a contemporary residential development, 903/172 South Parade presents a well-executed balance of modern design, spatial efficiency and strong investment credentials. Elevated within the building and benefiting from a desirable south-east aspect, the residence enjoys balanced natural light and an airy internal atmosphere that enhances day-to-day comfort.

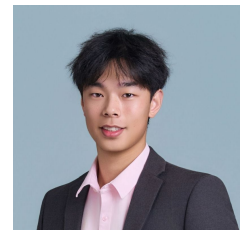
Located within easy walking distance of Auburn Central, Auburn Railway Station, local cafés and essential amenities, this address is firmly positioned within one of Auburn's most convenient lifestyle precincts, offering immediate access to transport, retail and daily services.

Offering approximately 99sqm on title, including parking

**Type** : Apartment  
**Price** : \$638,000~\$658,000  
**Land Size** : 99 sqm  
**View** : <https://www.hspartners.com.au/8653681>



**Andy Haisheng Shi**  
02 9643 5888



**Augustine Shi**  
02 9643 5888

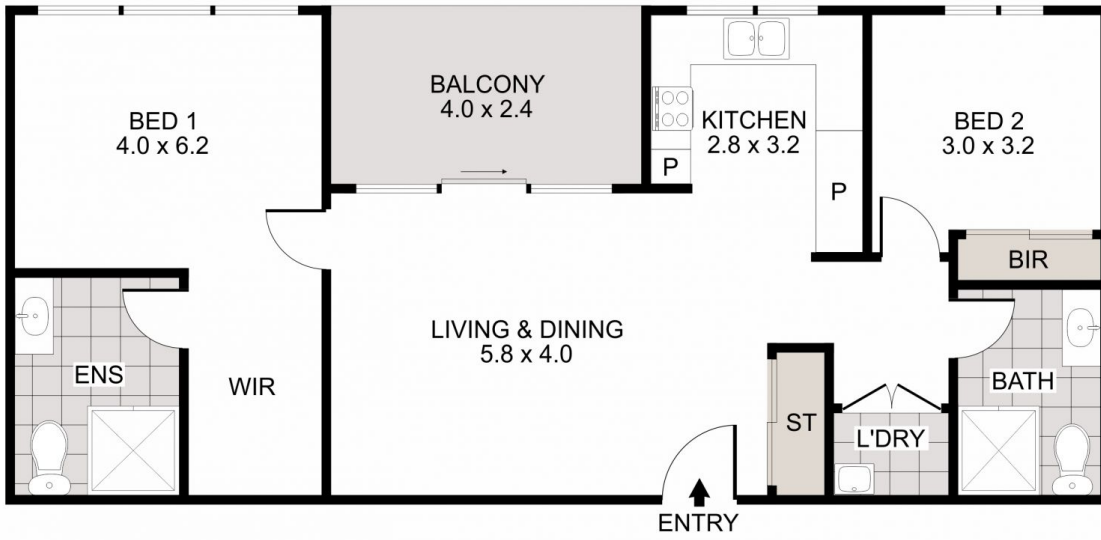
[For full version visit the website](https://www.hspartners.com.au)



CAR SPACE



ST CAGE



## 903/172 South Parade, Auburn

The information provided on this floor plan is shown for presentation purposes only and are not part of any legal document or title. They are subject to errors, omissions, inaccuracies and should not be used as a sole and accurate reference. Interested parties should make their own inquiries using independent sources.

